

Planning - Oxford City Planning Committee

On **Tuesday 20 August 2024** At **6.00 pm**

www.oxford.gov.uk



Presentations

Contents

Note: Planning Committee presentations contain mostly pictures, maps and plans. These are not in an accessible format.

To see full details of the application including full plans, representations, public comments and supplementary information, please [click here](#) and enter the relevant Planning Reference number in the search box

- | | | |
|----|--|---------|
| 3. | 24/00667/FUL: 111 and 113 Wytham Street, Oxford OX1 4TN | 3 - 20 |
| 4. | 24/00668/FUL: 113 Wytham Street, Oxford OX1 4TN | 21 - 30 |

The agenda, reports and any additional supplements can be found together with this supplement on the committee meeting webpage.

*View or subscribe to updates for agendas, reports and minutes at mycouncil.oxford.gov.uk.
All public papers are available from the calendar link to this meeting once published*

Oxford City Council, Town Hall, St Aldate's Oxford OX1 1BX

This page is intentionally left blank

Oxford City Planning Committee Presentation

**Reference Number:
24/00667/FUL**

**Site Address:
111 and 113 Wytham Street, Oxford,
OX1 4TN**

www.oxford.gov.uk



Site Location Plan



www.oxford.gov.uk



Site Frontage Existing – 111 Wytham Street



5

www.oxford.gov.uk



Site Rear Existing – 111 Wytham Street



www.oxford.gov.uk



Site Frontage Existing – 113 Wytham Street



www.oxford.gov.uk



Site Rear Existing – 113 Wytham Street



www.oxford.gov.uk



Site Side Elevation Facing North-West Existing – 113 Wytham Street



www.oxford.gov.uk



Site Side Elevation Facing South Existing – 113 Wytham Street



www.oxford.gov.uk



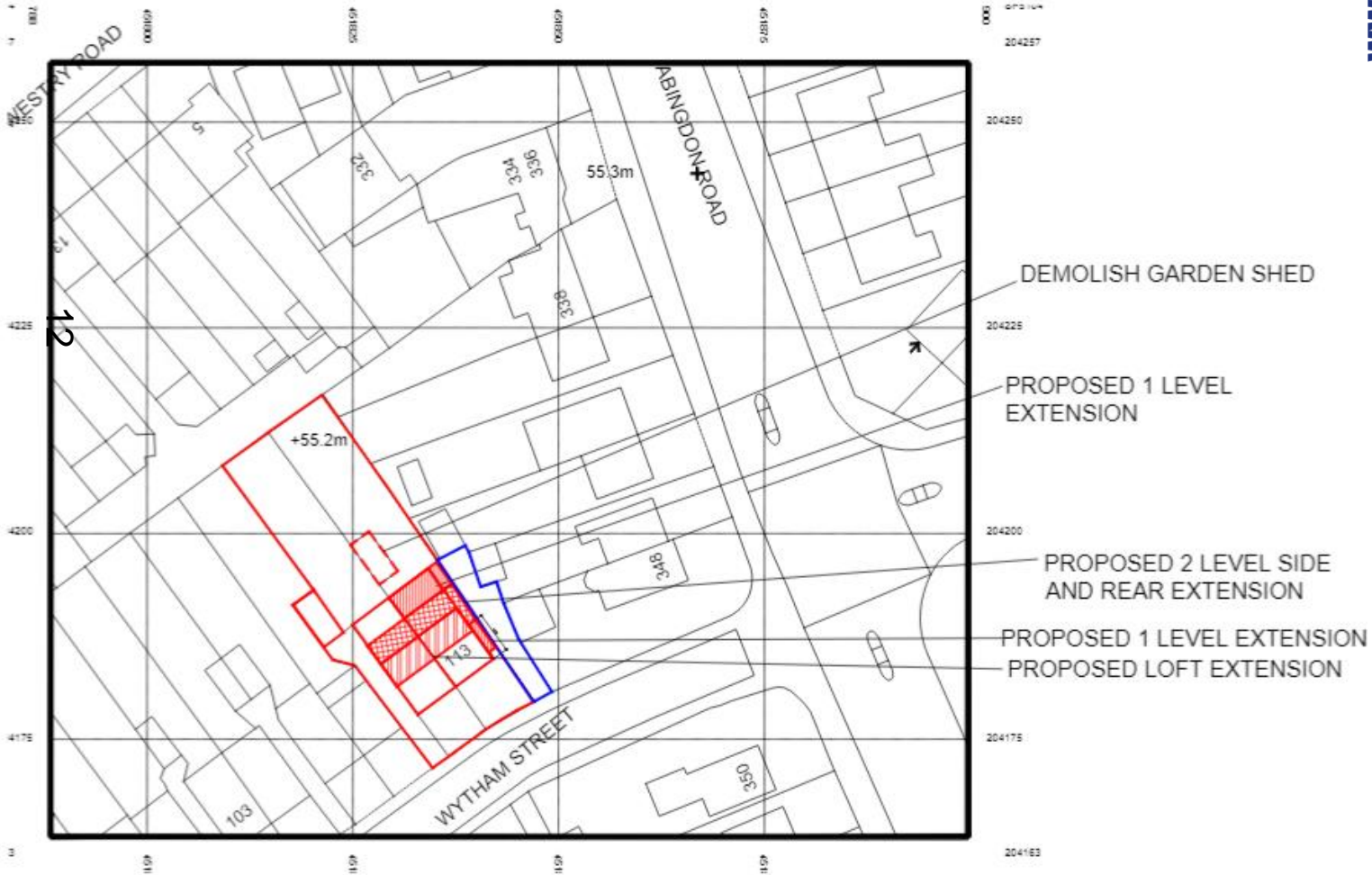
Existing Site Layout



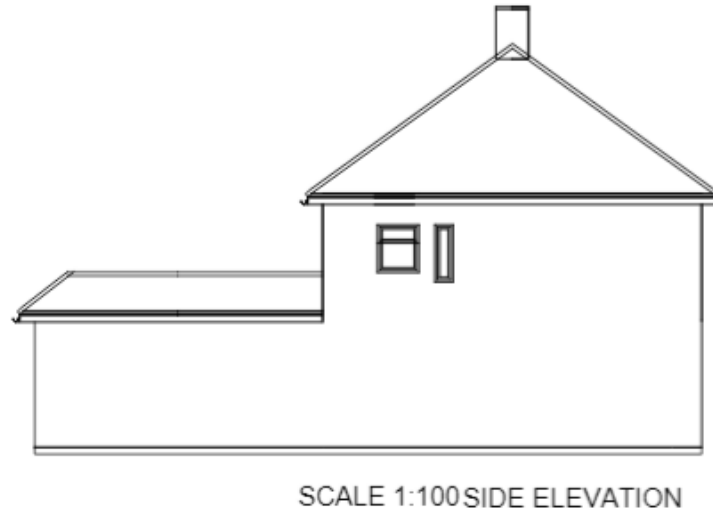
www.oxford.gov.uk



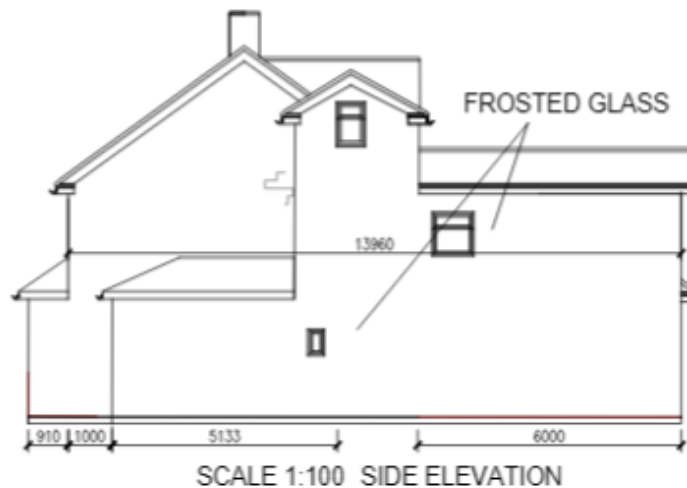
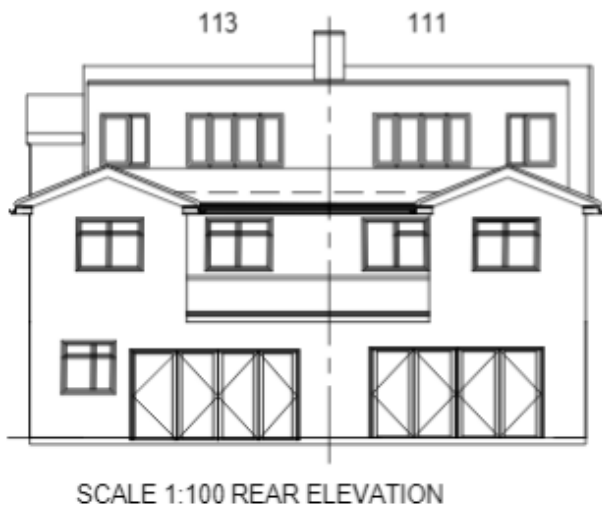
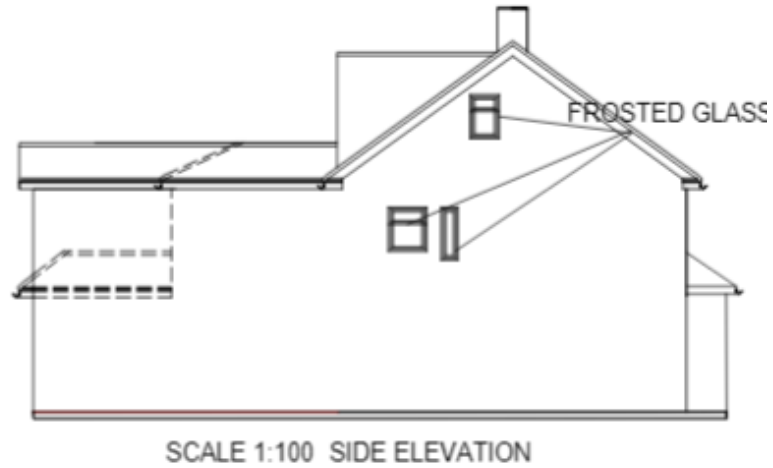
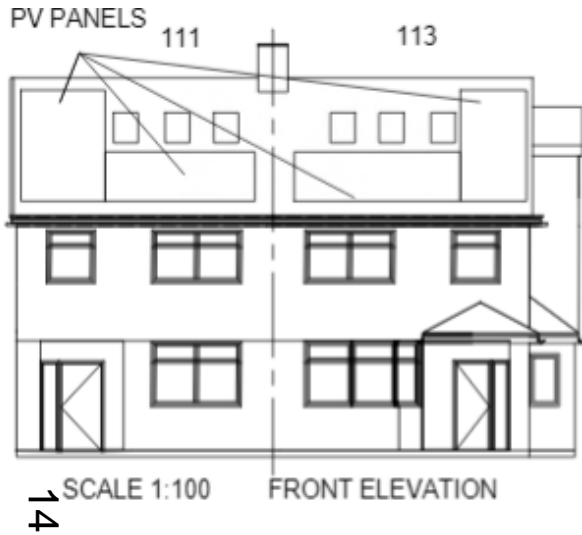
Proposed Site Layout



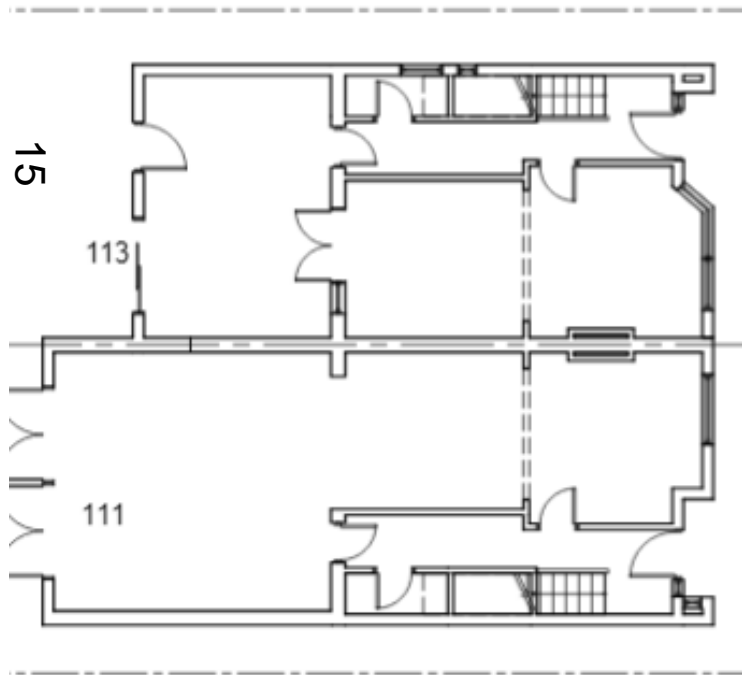
Existing Elevations



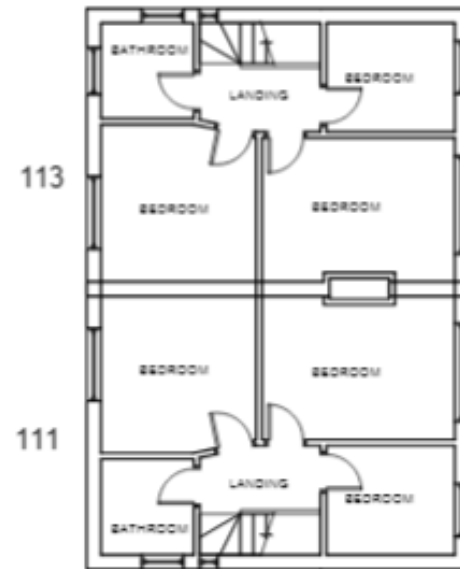
Proposed Elevations



Existing Plans – Ground and First Floor



GROUND FLOOR SCALE 1:100

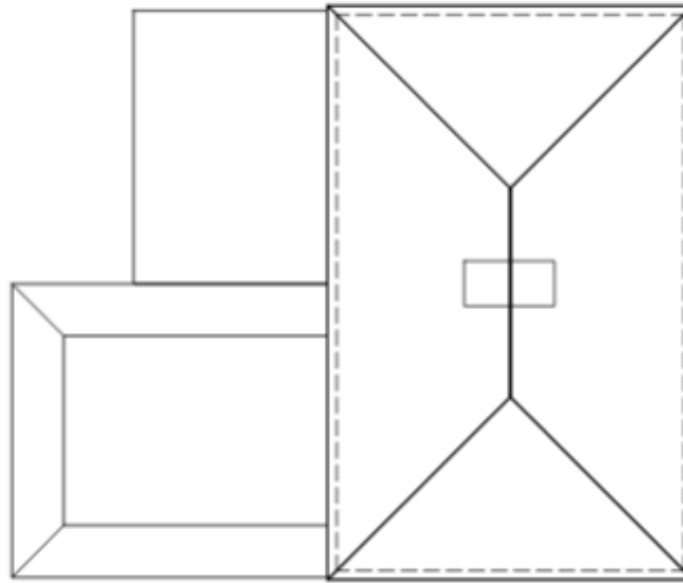


FIRST FLOOR SCALE 1:100



Existing Plans – Roof Plan

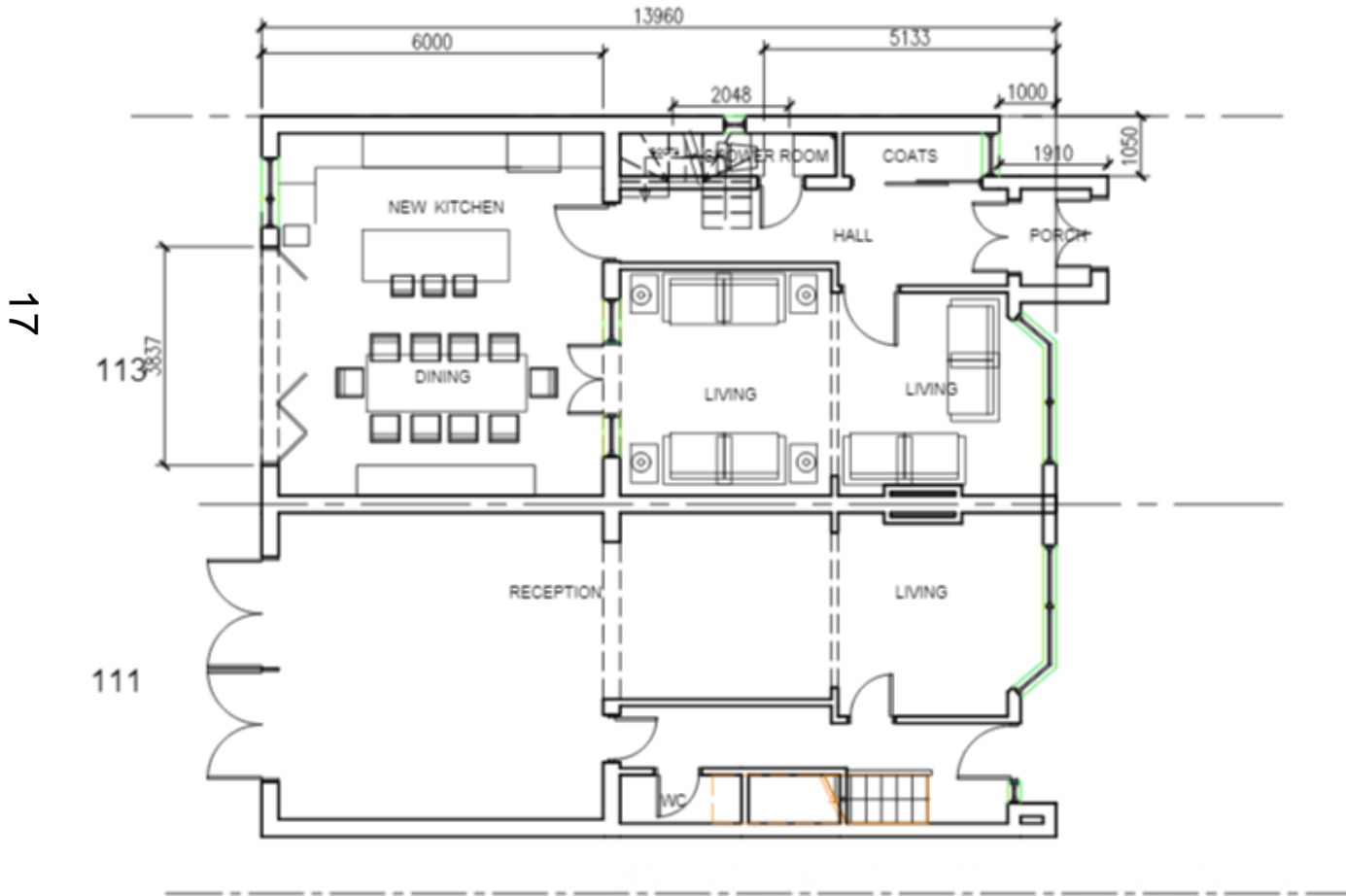
16



EXISTING ROOF PLAN

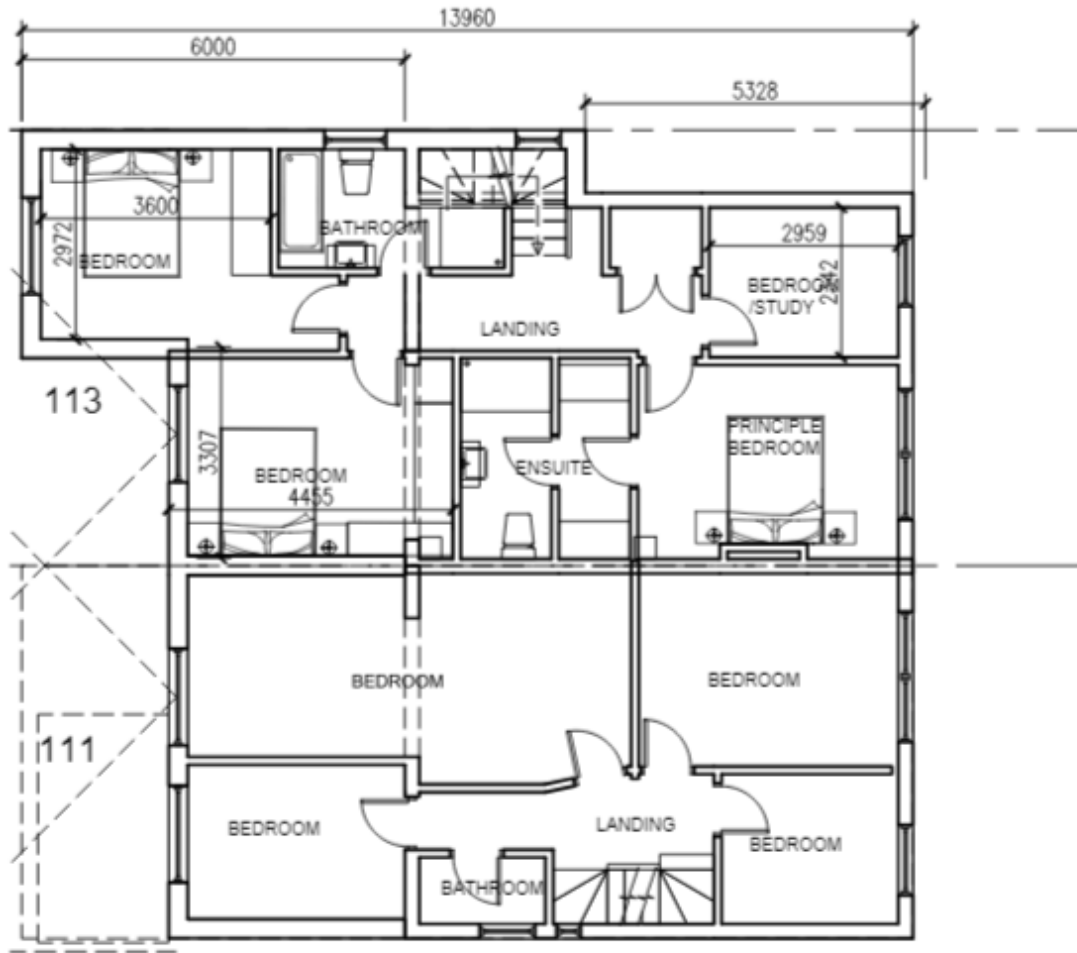


Proposed Plans – Ground Floor



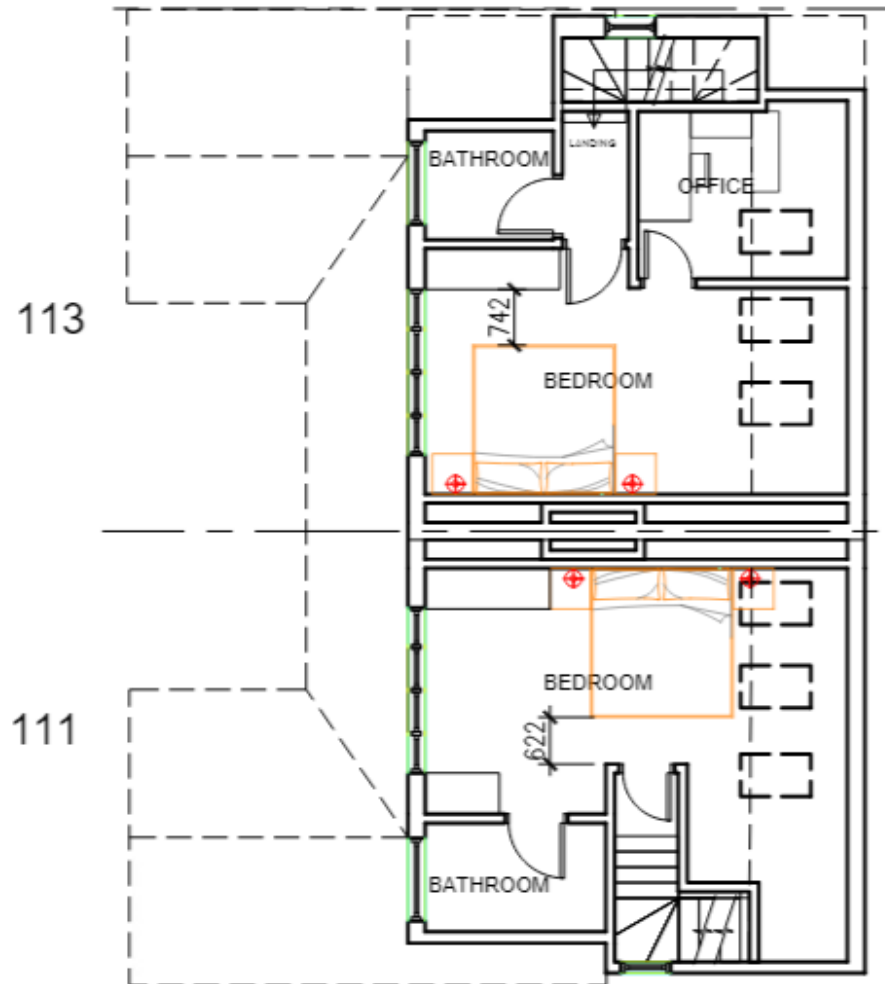
Proposed Plans – First Floor

18



Proposed Plans – Second Floor (Loft)

19

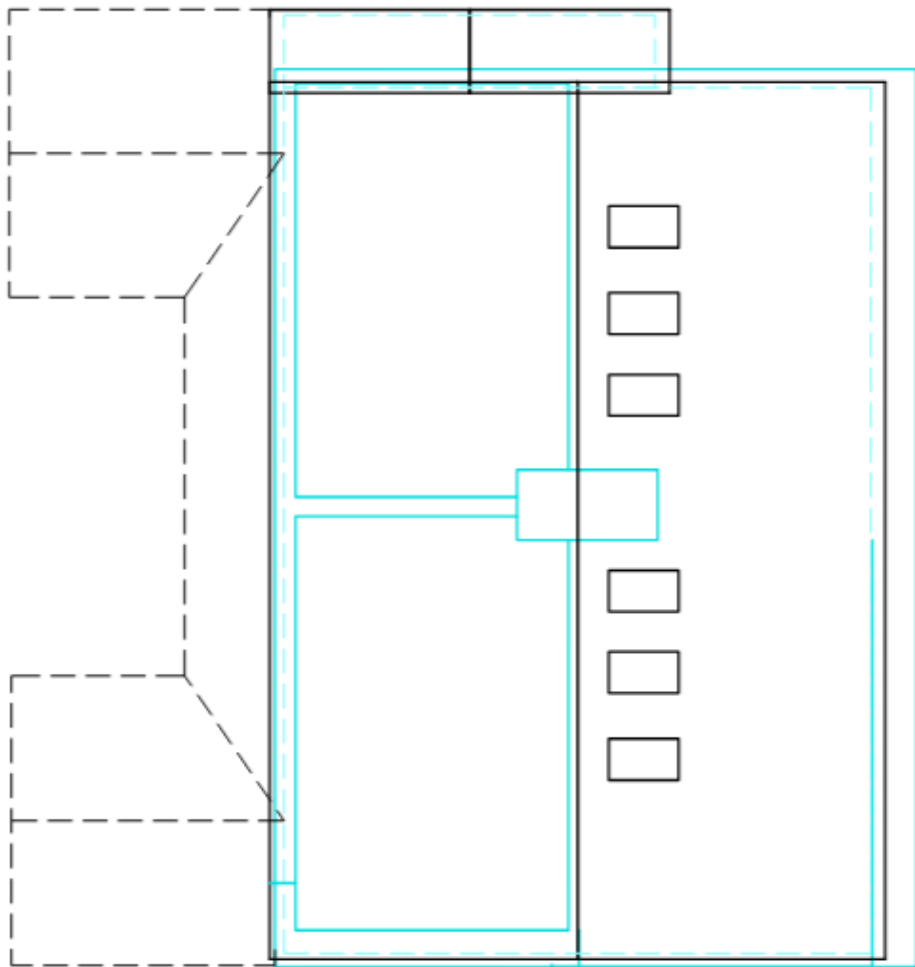


www.oxford.gov.uk



Proposed Plans – Roof Plan

20



www.oxford.gov.uk



**OXFORD
CITY
COUNCIL**



Oxford City Planning Committee Presentation

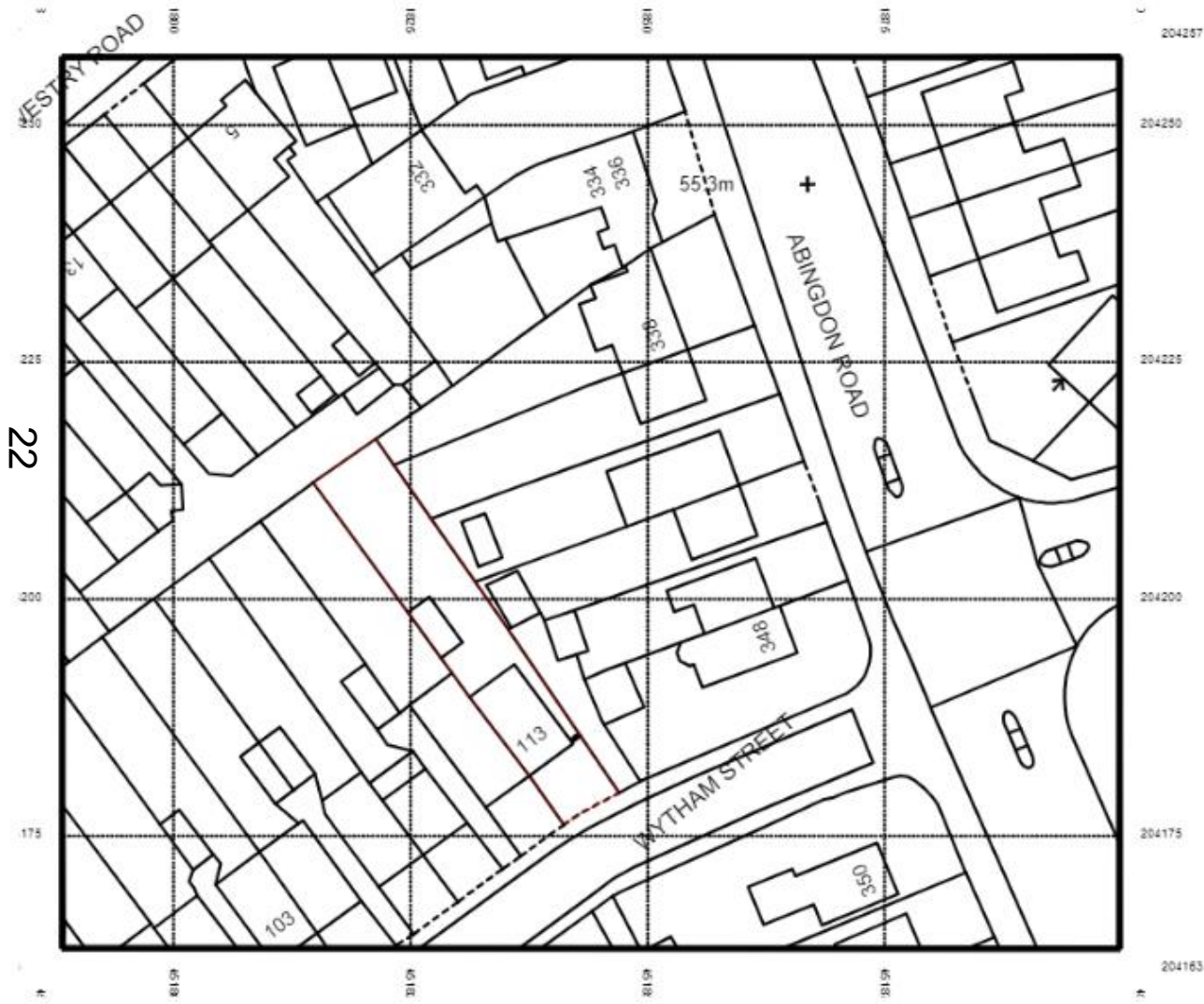
**Reference Number:
24/00668/FUL**

**Site Address:
113 Wytham Street, Oxford, OX1 4TN**

www.oxford.gov.uk



Site Location Plan



www.oxford.gov.uk



Site Frontage – Existing



23

www.oxford.gov.uk



Site Rear Elevation – Existing



24

www.oxford.gov.uk



Rear Garden Existing - Facing North



www.oxford.gov.uk



**OXFORD
CITY
COUNCIL**



Rear Garden Existing - Shed Facing West



26

www.oxford.gov.uk



**OXFORD
CITY
COUNCIL**



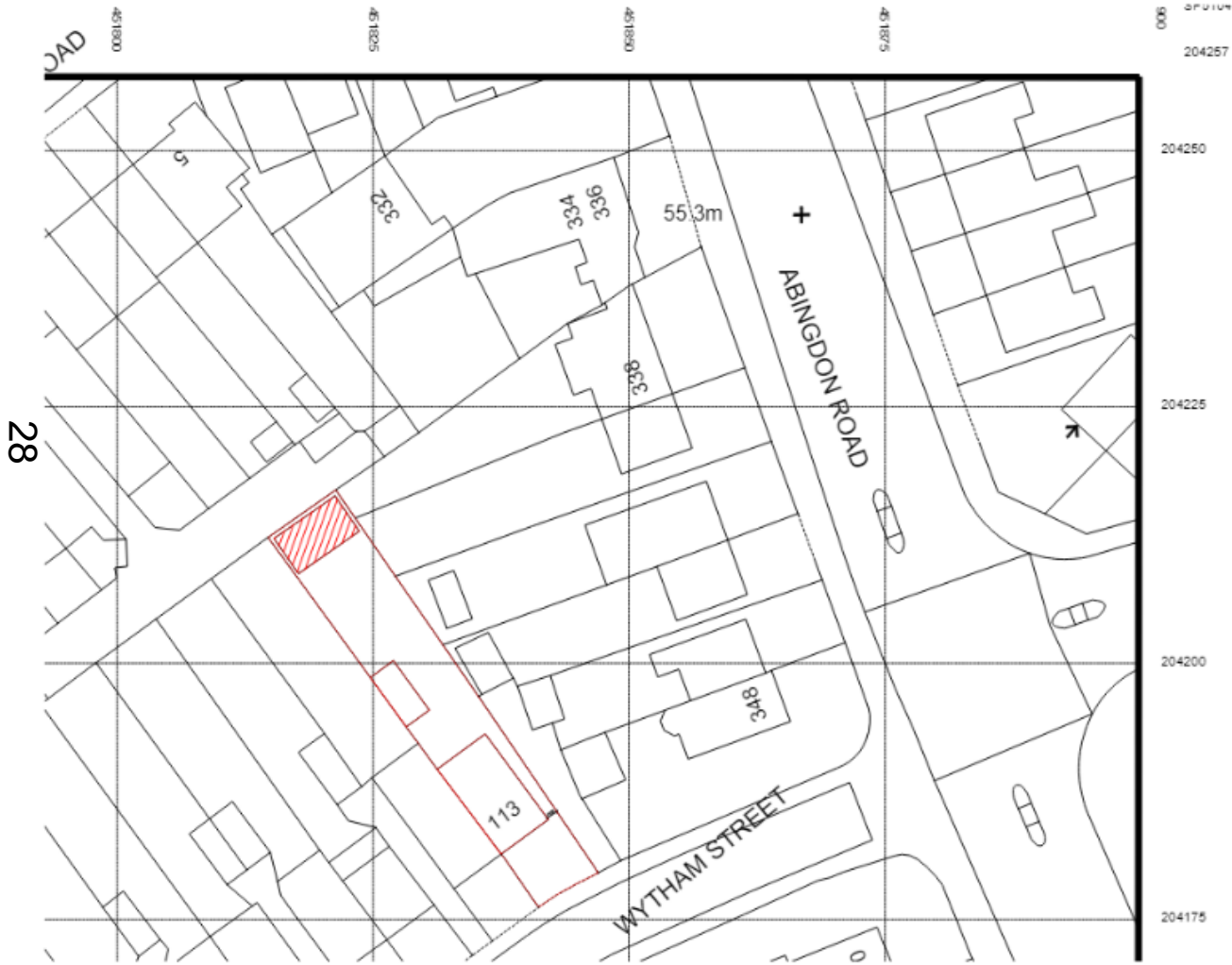
Existing Site Layout



www.oxford.gov.uk



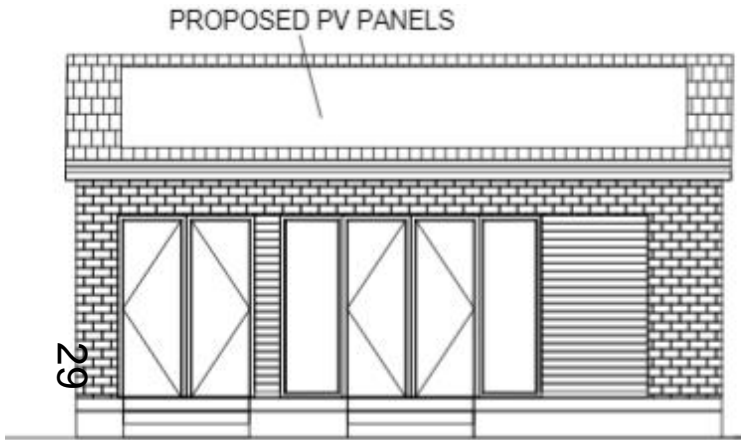
Proposed Site Layout



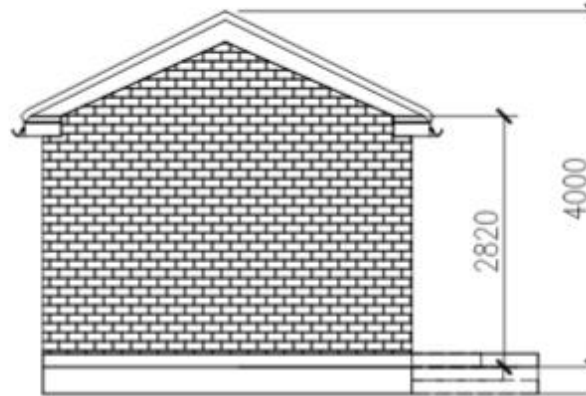
www.oxford.gov.uk



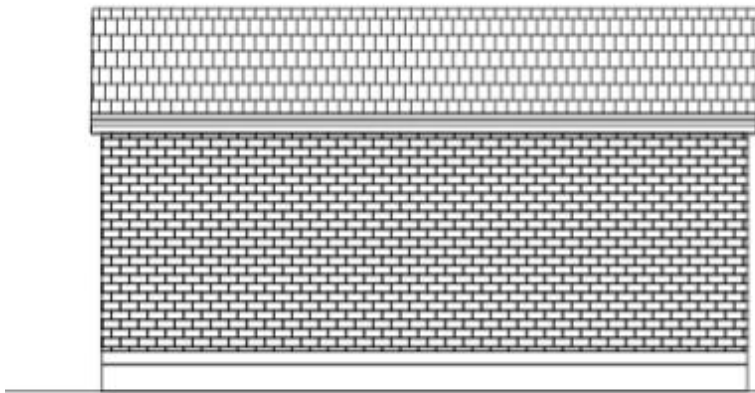
Proposed Elevations



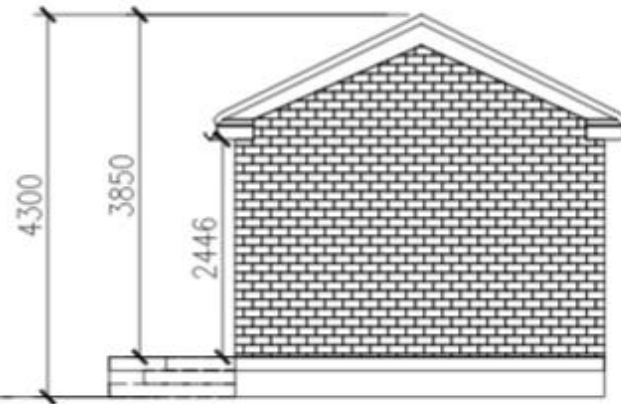
FRONT ELEVATION



SIDE ELEVATION



REAR ELEVATION



SIDE ELEVATION



Proposed Plans

